

Tunica County has now created a diversified economy that lives up to its reputation for being one of America's great economic success stories. New developments, new recreational facilities and new transportation are keeping Tunica County on the move and at the top.



Metro Mega Site

The 2,221-acre flexible and certified Metro Mega Site is ready to provide fast-track approval and operations for a major industrial or distribution company

In addition:

- 225 acres surrounding

Tunica National Golf & Tennis Club have been sold for a Planned Unit Development and will soon consist of retail, commercial and residential properties

Recreational Facilities

The Tunica RiverPark allows visitors to better see and understand the Mississippi River with a museum and interpretive center, observation deck and nature trails

The 400-passenger Tunica Queen riverboat provides visitors a chance to experience the Mighty Mississippi up close on a relaxing river cruise



16,000 new jobs have been created. Subsequently, Tunica County's budget grew from \$3.5 million in 1992 to \$61.8 million in 2005.

The 48,000-square-foot Tunica Arena & Expo Center is designed to accommodate a wide variety of events including equine and trade shows

How the Tunica Miracle Began

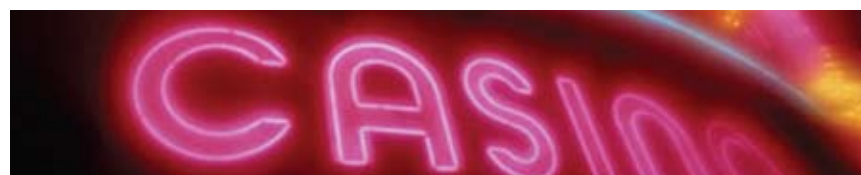
In 1990, the Mississippi Legislature legalized gaming as a way to create badly needed jobs and bring new industry to the river and costal areas. Tunica's civic and business leaders adopted gaming as part of an economic development strategy and the "Tunica Miracle" began.



In 1992, Splash casino landed in Tunica, creating jobs and world class casino resorts almost overnight. More than \$3 billion has since been invested in Tunica and more than

TUNICA VISITOR PROFILE

Estimated Annual Visitors: 10+ Million



Source: TNS/Tunica Visitor Study

Visitor

Average Age 58
77% Age 50+
51% Female
49% Male

Financial

\$60,000 Average Annual Income
\$618 Average Spent Per Trip
2.5 Nights Stayed in Tunica

Visitor Satisfaction

88%	11%	1%
Very Satisfied	Somewhat Satisfied	Dissatisfied

Purpose of Trip

66% To Gamble
25% To "Get Away"
9% To Visit Friends & Relatives

Added Activities

21% Casino Factory Shoppes
18% Memphis
13% Tunica RiverPark
13% Downtown Tunica



TUNICA COUNTY
P.O. Box 639 • Tunica, MS 38676
(662) 363-1465

www.TunicaCounty.com

CONVENTION & VISITORS BUREAU
P.O. Box 2739 • Tunica, MS 38676
(662) 363-3800

www.TunicaMiss.com

CHAMBER OF COMMERCE
P.O. Box 1888 • Tunica, MS 38676
(662) 363-2865

www.TunicaChamber.com

Tourism Marketing Partners provided support for this report.

Developed, designed and produced by



Printed in Mississippi by



©2006. All rights reserved. Contents of this publication cannot be reproduced without the written consent of the publisher.

The Tunica Convention & Visitors Bureau has made every effort to ensure the accuracy of information published in this document. However, information is subject to change without notice.



2005 ANNUAL REPORT

Tunica County: The Miracle Continues

Interstate Highways

Tunica is only minutes away from I-55, I-40 and the new I-69 (scheduled to open in 2006) that will provide interstate access to the resorts of Tunica, making it one of the most accessible travel destinations in the U.S.

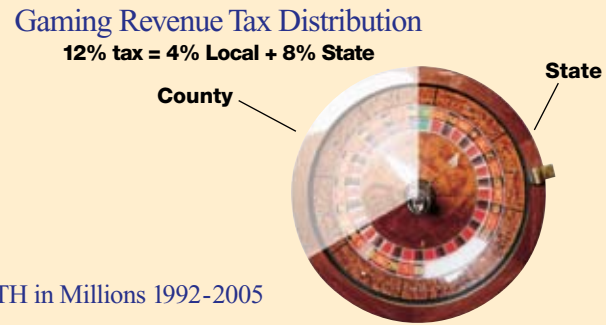
Approximately \$53.4 million was spent from 1992-2005 to upgrade Tunica's four-lane roads and highways, building them to resort standards

Tunica Airport

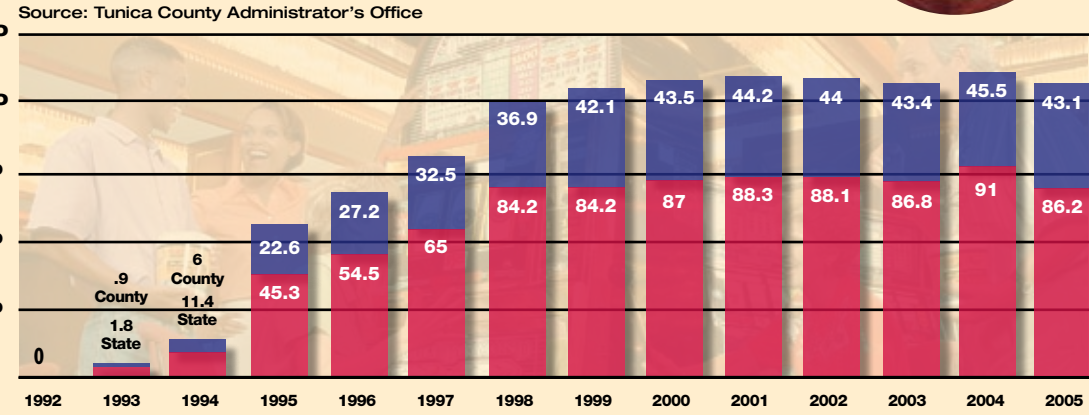
Scheduled round-trip Pan Am air service from Atlanta to Tunica is now a reality, and a major expansion at Tunica Airport now enables Tunica to grow our transportation offerings



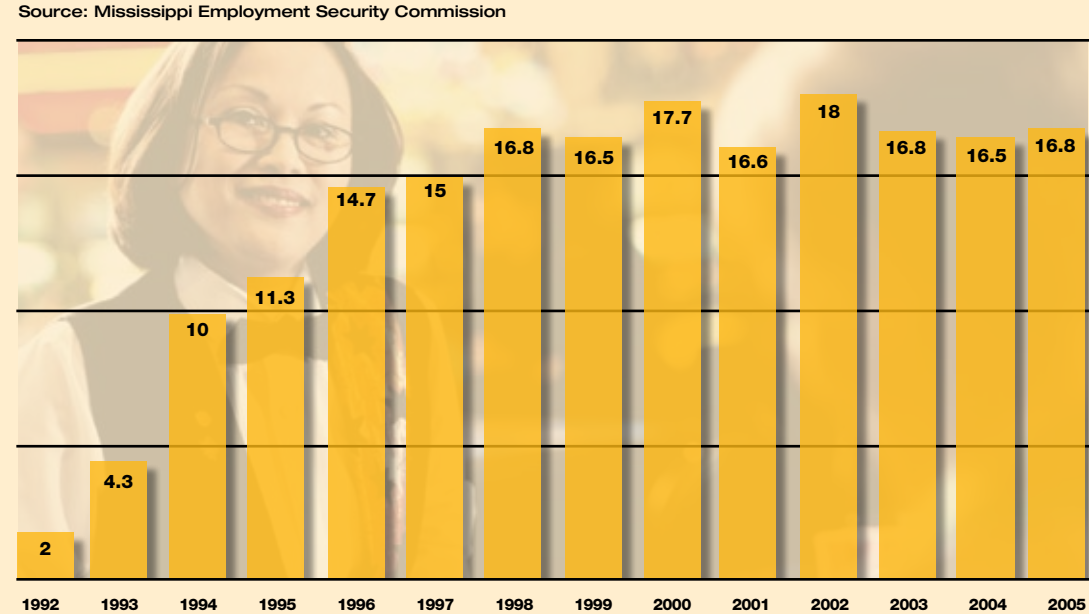
TUNICA COUNTY ECONOMIC DEVELOPMENT



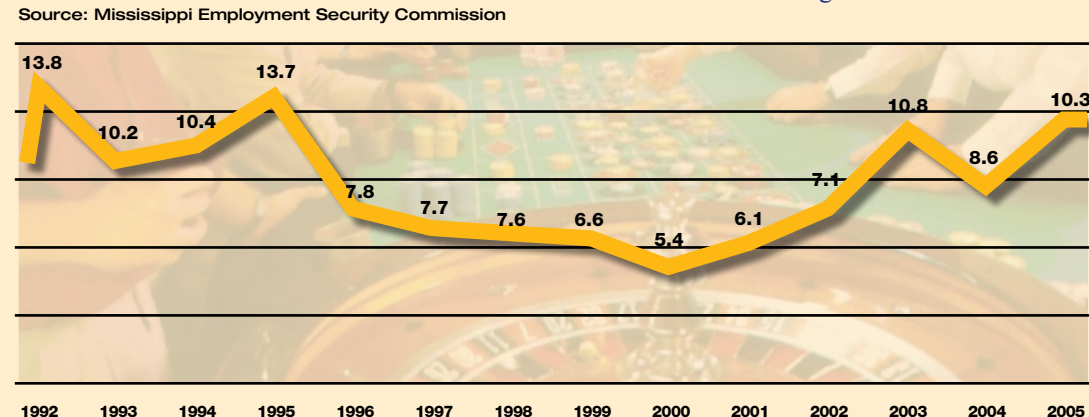
COUNTY/STATE GAMING REVENUE GROWTH in Millions 1992-2005



TUNICA COUNTY JOB GROWTH in Thousands 1992-2005



TUNICA COUNTY UNEMPLOYMENT ANNUAL AVERAGES in Percentages 1992-2005

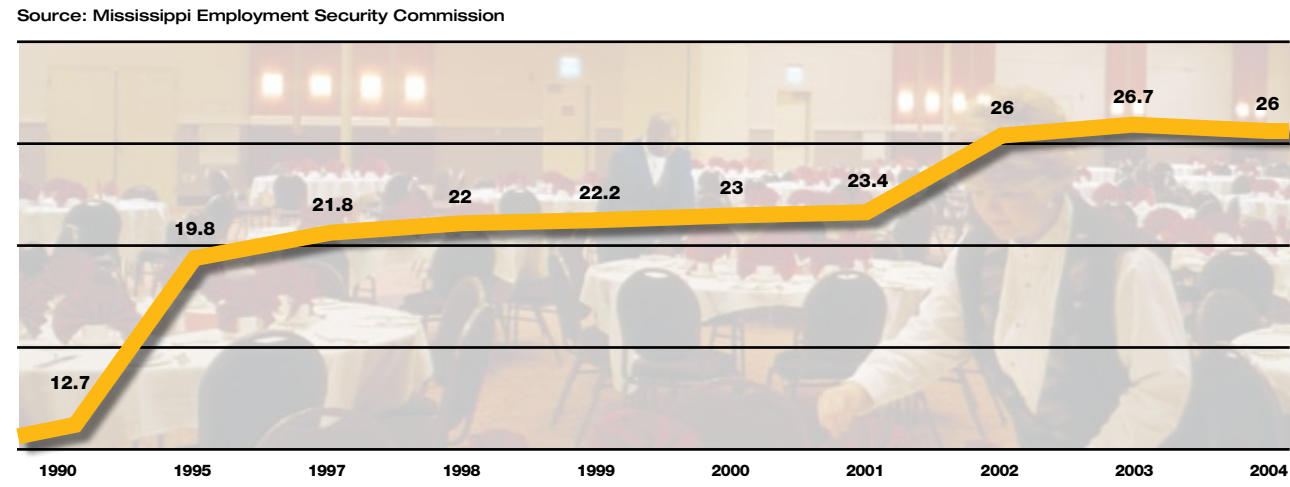


QUALITY OF LIFE INDICATORS

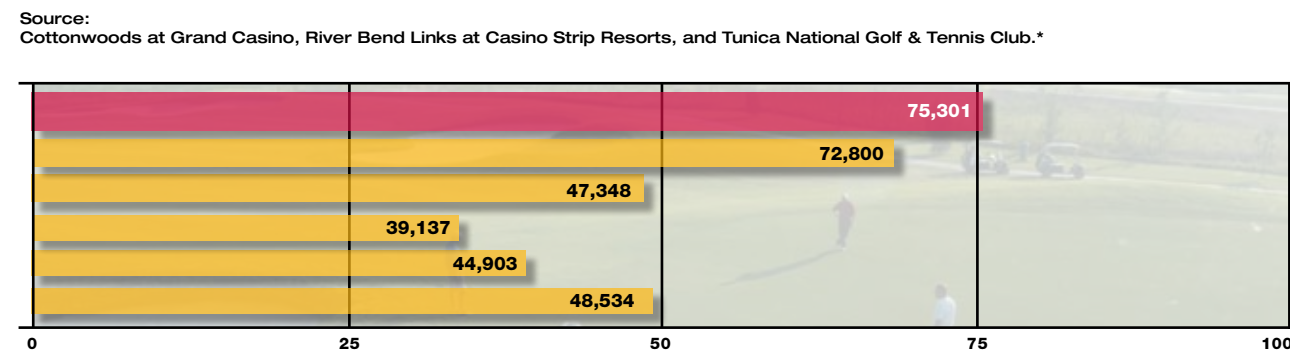
Investment (Millions)	Project Description
\$53.4	More than 30 miles of four-lane roads built to resort standards
\$40.8	Education: new schools, increased teacher salaries and per-pupil program support
\$29	Tunica Arena & Exposition Center
\$26.5	Tunica RiverPark Museum, Landing and Nature Trail
\$28.2	Water, sewer and drainage improvements
\$14	Tunica National Golf & Tennis Club
\$14	Airport expansion
\$8.3	Youth and family recreation: new facilities, programs and additional construction
\$13.2	Law enforcement and fire protection: improvements to facilities and equipment
\$5	Housing rehabilitation and support services for elderly and disabled
\$2	Tunica Museum
\$1.6	Tunica Lake restoration
\$1.5	Library expansion

Source: Tunica County Administrator's Office

TUNICA COUNTY ANNUAL AVERAGE WAGE in Thousands 1990-2004



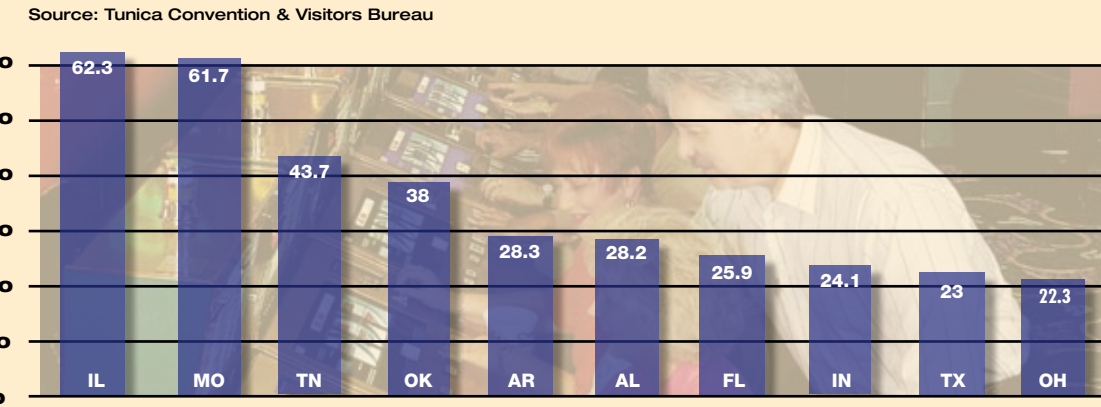
TUNICA COUNTY GOLFING ROUNDS PLAYED in Thousands 2000-2005



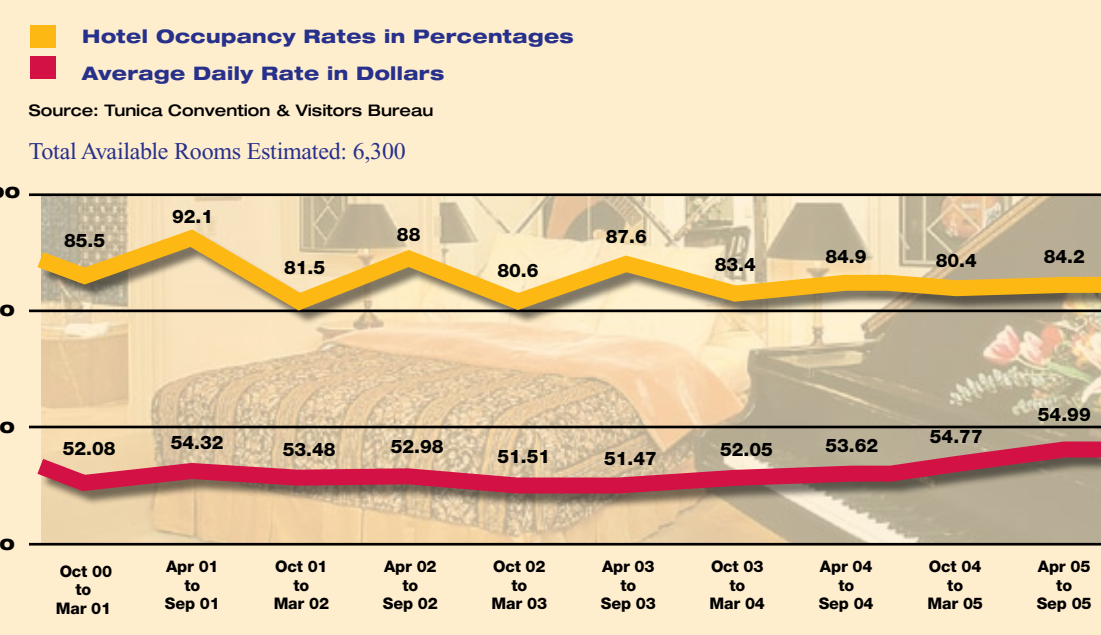
*Tunica National opened for play in 2004.

TOURISM INDICATORS

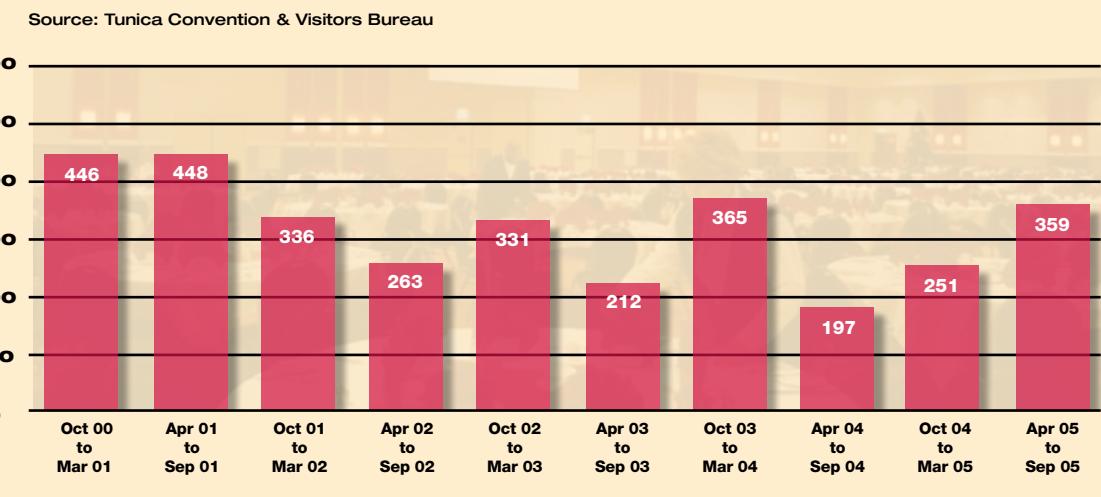
TOP 10 STATES FOR CVB VISITOR INQUIRIES in Thousands 1998-2005



HOTEL OCCUPANCY RATES & AVERAGE DAILY RATE 2000-2005



MEETINGS & CONVENTIONS SEASONAL STATISTICS in Hundreds 2000-2005



REGISTERED VISITORS AT THE TUNICA VISITORS CENTER

Source: Tunica Convention & Visitors Bureau
January through December

Year	Registered Visitors
2001	51,672
2002	58,925
2003	59,335
2004	60,025
2005	54,631

TUNICA GAMING STATISTICS

Source: Mississippi Gaming Commission
As of December 31, 2005

Casino Resorts	9
Employees	10,826
Gaming Square Footage	530,119
Other Square Footage	3,082,879
Slot Games	13,696
Table Games	451



MOTORCOACH ARRIVALS

Source: Tunica Convention & Visitors Bureau
July 2004 through June 2005

Total Motorcoach Arrivals	14,793
Total Passengers	523,436*

*This is not the total number because not all properties reported arrivals due to property consolidations and mergers.